

Health and Wellness Town Hall

Office of the Dean of Students



April 19th, 2016

Alan Rasmussen
Case Manager
Office of the Dean of Students

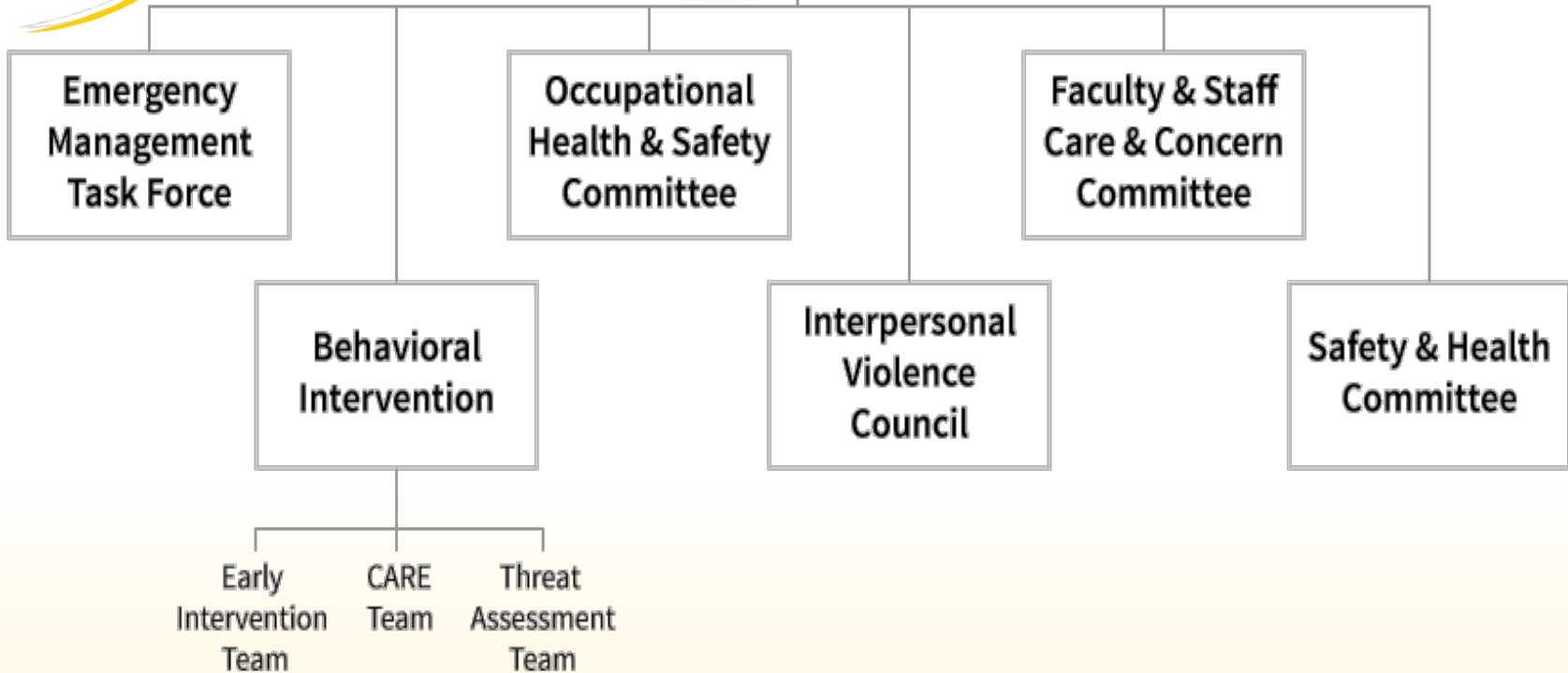
Office of the Dean of Students

Suite 324 Plemmons Student Union

- Parent and Family Services
- Off-Campus Community Relations
- Student Legal Clinic
- Case Management
- Interpersonal Violence Support and Prevention



University Health & Safety Council



Collecting Data



- A goal for the next few years
- We continue to update data collection methodology in order to best capture the most critical information
- We look at demographics, historical data, themes and patterns
- The benefits will be in the coming years as we work to understand trends and make data driven decisions

EIT Highlights for Fall 2015



- Typical referral:
 - concerning absences, change in behavior/appearance/performance, emotional distress, withdrawn/disengaged
- Total number of inquiries = 343
- Number of interventions = 80
- Referent:
 - Faculty – 243, Staff – 34, DOS – 17 ,Other - 1

CARE Team Numbers

Individual Situations Navigated by the Team



Fall 2013: 304

Spring 2014: 267

Fall 2014: 478

Spring 2015: 371

Fall 2015: 619

Spring 2016: projected
increase

CARE Team Fall 2015

Primary Concern or Reason for Referral



Mental Health	209	35%
IPV	160	26%
Other	250	29%

- Mental Health and IPV Concerns = 61%
- Mental Health = Suicidal Ideation/Attempt, Self Harm, Eating Concerns, etc.
- IPV = Sexual Assault, Childhood Trauma, Stalking, Harassment, etc.
- Other = Alcohol and Other Drug, Medical, Relationship Concerns, Grief, and more

CARE Team Fall 2015

HOME OFFICE

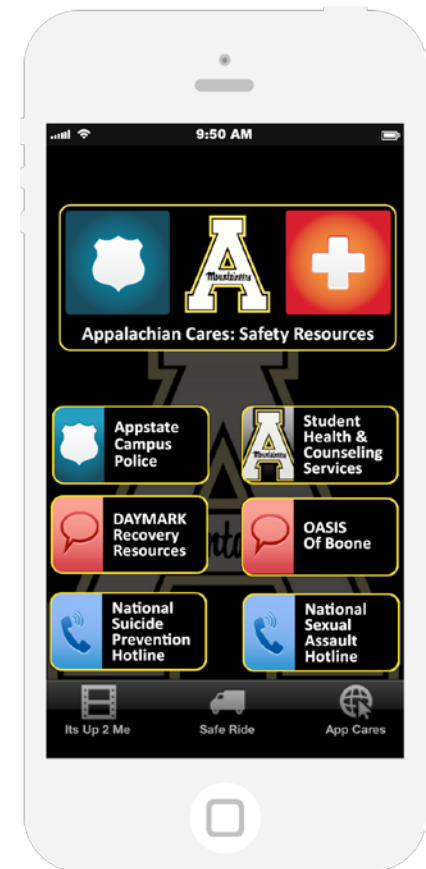
EIT	10	1%
Conduct	28	5%
Housing	137	22%
DOS	444	72%

CLASSIFICATION

Freshman	237	38%
Sophomore	150	24%
Junior	130	21%
Senior	95	15%
Grad Student	5	1%
Non-Degree Seeking	2	0%

Referent

- Housing
- Staff
- Faculty
- ASU Police Department
- Family
- Other – Self, Hospital Crisis Team, Fellow Student, Other Police Departments



By the Numbers



CARE Team Fall 2014

Total Situations = 478

Averaged **26.5** concerns per week

From Fall '13 to '14 - **57% increase**

CARE Team Fall 2015

Total Situations = 619

Averaged **34.4** concerns per week

From Fall '14 to 15 – **46% increase**

From Fall '12 to '15 - **153% increase**

Next Steps



- ◀ If you are concerned about a fellow student please reach out, we want to offer support, resources and connections to those who need it.
- ◀ We work to be more efficient and effective with our resources and support.
- ◀ We are open to suggestions!
- ◀ We want to hear from you!





Questions?